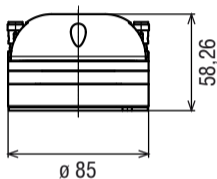


PU 471-K

300 Watt max | 8 Ω | Throat diameter 1"

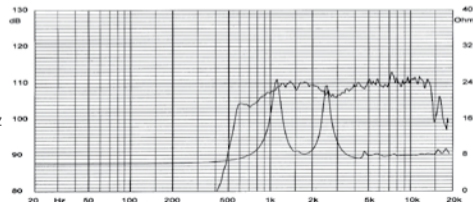


Potenza nominale	140 W	Re	5,4 Ω	D	-
Impedenza nominale	8 Ω	Fs	1200 Hz	Vas	-
Sensibilità (1W/1m)	109 dB	Qms	-	BxI	-
Ø bobina mobile	44 mm	Qes	-	Xmax	-
Altezza traferro	-	Qts	-	η _o	-
Fori di fissaggio	3 °6 / Ø 57	Mms	-	Le	-
Foro pannello	-	Cms	-	Peso	1,06 Kg



con tromba PR 312

Frequenza di taglio
consigliata 2.000 Hz
12 dB/oct.
Recommended
crossover 2.000 Hz
12 dB/oct.



DRIVER

Driver a compressione, membrana in Kapton, magnete in Neodimio
Compression driver, Kapton diaphragm, neodymium magnet

