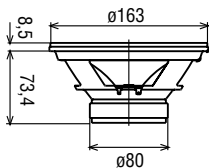


CZ 230

120 Watt max | 4 Ω | ellittico 230x160 mm / 9"x 6"



COASSIALI

2 Vie coassiali, membrana woofer in polipropilene, tweeter in neodimio

2 Way coax, polypropylene cone, neodymium tweeter

Potenza nominale	50 W	Re	3,5 Ω	D	177 mm
Impedenza nominale	4 Ω	Fs	66 Hz	Vas	42,23 dm³
Sensibilità (1W/1m)	94 dB	Qms	3,11	Bxl	3,29 Wb/m
\varnothing bobina mobile	25 mm	Qes	1,55	Xmax	1,7 mm
Altezza traferro	4 mm	Qts	1,03	η_c	-
Fori di fissaggio	4 \varnothing 7 ■ 165x120	Mms	11,53 g	Le	-
Foro pannello	ell.220x151 mm	Cms	0,50 mm/N	Peso	0,86 Kg