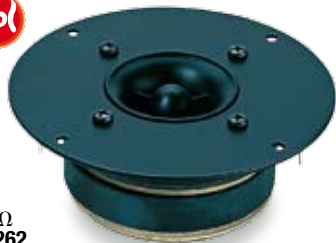


CT 267

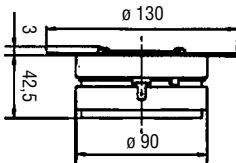
300 Watt max | 4 Ω | Ø 26 mm / 1"



► 8 Ω
PT 262
PAG 101

HORN TWEETER

A compression, membrana in alluminio, con ferrofluido
Compression tweeter, aluminium diaphragm, ferrofluid cooled



Potenza nominale	150 W	Re	3,2 Ω	D	-
Impedenza nominale	4 Ω	Fs	1,8 kHz	Vas	-
Sensibilità (1W/1m)	105 dB	Qms	-	BxI	-
Ø bobina mobile	26 mm	Qes	-	Xmax	-
Altezza traferro	4 mm	Qts	-	η _e	-
Fori di fissaggio	4 ∅5 / Ø 116	Mms	-	Le	0,02 mH
Foro pannello	95 mm	Cms	-	Peso	1,15 Kg

